

API RING JOINT GASKETS

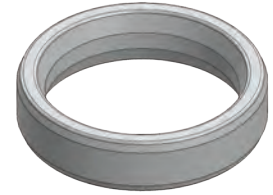
RX Series

For Up From 2,000 to 5,000 PSI



HARDNESS CHART

| RING GASKET MATERIAL | MAXIMUM HARDNESS | | IDENTIFICATION MARK |
|----------------------|------------------|------------|---------------------|
| | BRINELL | ROCKWELL B | |
| Low Carbon Steel | 120 | 68 | S |
| 316 SS | 160 | 83 | S 316 |



Cross Section

ORDERING INFO AND DIMENSIONS

API 6A Ring Joint Gaskets

| RING GROOVE SIZE | FLANGE SIZE | PRESSURE RATING | PART # | |
|------------------|-------------|----------------------|------------------|----------|
| | | | LOW CARBON STEEL | 316 SS |
| RX-23 | 2 1/16" | 2,000 | RG511023 | RG512023 |
| RX-24 | 2 1/16" | 3,000/5,000 | RG511024 | RG512024 |
| RX-26 | 2 9/16" | 2,000 | RG511026 | RG512026 |
| RX-27 | 2 9/16" | 3,000/5,000 | RG511027 | RG512027 |
| RX-31 | 3 1/8" | 2,000/3,000 | RG511031 | RG512031 |
| RX-35 | 3 1/8" | 5,000 | RG511035 | RG512035 |
| RX-37 | 4 1/16" | 2,000/3,000 | RG511037 | RG512037 |
| RX-39 | 4 1/16" | 5,000 | RG511039 | RG512039 |
| RX-41 | 5 1/8" | 2,000/3,000 | RG511041 | RG512041 |
| RX-45 | 7 1/16" | 2,000/3,000 | RG511045 | RG512045 |
| RX-45/46* | 7 1/16" | 2,000/3,000 to 5,000 | RG511456 | RG512456 |
| RX-46 | 7 1/16" | 5,000 | RG511046 | RG512046 |
| RX-49 | 9" | 2,000/3,000 | RG511049 | RG512049 |
| RX-50 | 9" | 5,000 | RG511050 | RG512050 |
| RX-53 | 11" | 2,000/3,000 | RG511053 | RG512053 |
| RX-54 | 11" | 5,000 | RG511054 | RG512054 |
| RX-57 | 13 5/8" | 2,000/3,000 | RG511057 | RG512057 |
| RX-73 | 21 1/4" | 2,000 | RG511073 | RG512073 |
| RX-74 | 20 3/4" | 3,000 | RG511074 | RG512074 |

* Non API transition Gasket.
ASME B16.5 RX Gaskets available upon request.