

# Ring Joint Gaskets

*R Series, RX Series,*

*BX Series, Rubber*

*Coated Series*



#310, 8810 - 15th Street  
Edmonton, Alberta, Canada T6P 0B9  
(780) 416-4823 sales@grmflow.com

# RING JOINT GASKETS

All of our Ring Joint Gaskets are manufactured to the worldwide standards set by the American Petroleum Institute, as well as the American Society of Mechanical Engineers. Our Ring Joint Gaskets are readily available in different cross sections such as oval and octagonal, and are precision machined and rated up to 20,000 PSI.

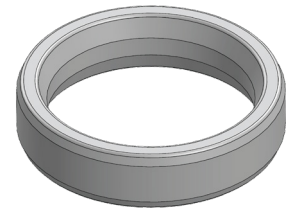
We offer a selection of commonly required sizes of R Series, RX Series and BX Series in a variety of materials including low carbon steel, stainless steel, and BUNA rubber coated.

## FEATURES

- R Series:
  - Available in low carbon steel, 316 stainless steel and rubber coated
  - For pressures up to 5,000 PSI
- RX Series:
  - Available in low carbon steel and 316 stainless steel
  - For pressures up to 5,000 PSI
- BX Series:
  - Available in low carbon steel, 316 stainless steel and rubber coated
  - For pressures up to 20,000 PSI
- Rubber Coated Series:
  - BUNA rubber coated Ring Joint Gaskets are used for testing purposes and are not to be used for permanent installation
  - With proper handling rubber coated Ring Joint Gaskets can be used for several tests.



*R Series*



*RX Series*



*BX Series*



*Rubber Coated Series*

# API RING JOINT GASKETS

## R Series

For Use Up to 5,000 PSI



### HARDNESS CHART

RING GASKET MATERIAL	MAXIMUM BRINELL	HARDNESS ROCKWELL B	IDENTIFICATION MARK
Low Carbon Steel	120	68	S
316 SS	160	83	S 316



Cross Section

### ORDERING INFO AND DIMENSIONS

#### ASME B16.5 Ring Joint Gaskets

RING GROOVE SIZE	FLANGE SIZE	PRESSURE RATING	Part Numbers	
			LOW CARBON STEEL	316 SS
R-16	1"	300/600/900/1,500	RG501016	RG502016
R-18	1"	2,500	RG501018	RG502018
	1 1/4"	300/600/900/1,500	RG501018	RG502018
R-20	1 1/2"	300/600/900/1,500	RG501020	RG502020
R-23	1 1/2"	2,500	RG501023	RG502023
	2"	300/600	RG501023	RG502023
R-24	2"	900/1,500	RG501024	RG502024
R-26	2"	2,500	RG501026	RG502026
R-31	3"	300/600/900	RG501031	RG502031
R-32	3"	2,500	RG501032	RG502032
R-35	3"	1,500	RG501035	RG502035

# API RING JOINT GASKETS

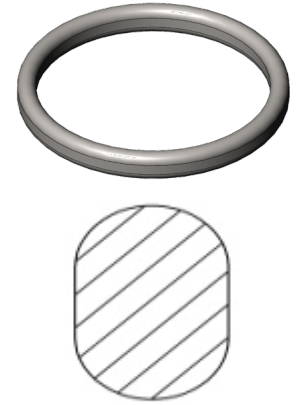
## R Series

For Use Up to 5,000 PSI



### HARDNESS CHART

RING GASKET MATERIAL	MAXIMUM BRINELL	HARDNESS ROCKWELL B	IDENTIFICATION MARK
Low Carbon Steel	120	68	S
316 SS	160	83	S 316



Cross Section

### ORDERING INFO AND DIMENSIONS

#### API 6A Ring Joint Gaskets

Part Numbers

RING GROOVE SIZE	FLANGE SIZE	PRESSURE RATING	LOW CARBON STEEL	316 SS
R-23	2 1/16"	2,000	RG501023	RG502023
R-24	2 1/16"	3,000/5,000	RG501024	RG502024
R-26	2 9/16"	2,000	RG501026	RG502026
R-27	2 9/16"	3,000/5,000	RG501027	RG502027
R-31	3 1/8"	2,000/3,000	RG501031	RG502031
R-35	3 1/8"	5,000	RG501035	RG502035
R-37	4 1/16"	2,000/3,000	RG501037	RG502037
R-39	4 1/16"	5,000	RG501039	RG502039
R-41	5 1/8"	2,000/3,000	RG501041	RG502041
R-44	5 1/8"	5,000	RG501044	RG502044
R-45	7 1/16"	2,000/3,000	RG501045	RG502045
R-45/46	7 1/16"	2,000/3,000 to 5,000	RG501456	RG502456
R-46	7 1/16"	5,000	RG501046	RG502046
R-49	9"	2,000/3,000	RG501049	RG502049
R-50	9"	5,000	RG501050	RG502050
R-53	11"	2,000/3,000	RG501053	RG502053
R-54	11"	5,000	RG501054	RG502054
R-57	13 5/8"	2,000/3,000	RG501057	RG502057
R-66	16 3/4"	3,000	RG501066	RG502066
R-73	21 1/4"	2,000	RG501073	RG502073
R-74	20 3/4"	3,000	RG501074	RG502074



# API RING JOINT GASKETS

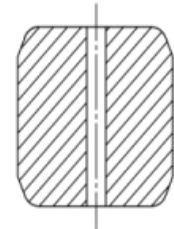
## BX Series

For Up to 20,000 PSI



### HARDNESS CHART

RING GASKET MATERIAL	MAXIMUM BRINELL	HARDNESS ROCKWELL B	IDENTIFICATION MARK
Low Carbon Steel	120	68	S
316 SS	160	83	S 316



Cross Section

### ORDERING INFO AND DIMENSIONS

#### API 6A Ring Joint Gaskets

RING GROOVE SIZE	FLANGE SIZE	PRESSURE RATING	Part Numbers	
			LOW CARBON STEEL	316 SS
BX-150	1 11/16"	10,000/15,000	RG801150	RG802150
BX-151	1 13/16"	10,000/15,000/20,000	RG801151	RG802151
BX-152	2 1/16"	10,000/15,000/20,000	RG801152	RG802152
BX-153	2 9/16"	10,000/15,000/20,000	RG801153	RG802153
BX-154	3 1/16"	10,000/15,000/20,000	RG801154	RG802154
BX-155	4 1/16"	10,000/15,000/20,000	RG801155	RG802155
BX-156	7 1/16"	10,000/15,000/20,000	RG801156	RG802156
BX-157	9"	10,000/15,000/20,000	RG801157	RG802157
BX-158	11"	10,000/15,000/20,000	RG801158	RG802158
BX-159	13 5/8"	10,000/15,000/20,000	RG801159	RG802159
BX-160	13 5/8"	5,000	RG801160	RG802160
BX-162	16 3/4"	5,000/10,000	RG801162	RG802162
BX-163	18 3/4"	5,000	RG801163	RG802163
BX-164	18 3/4"	10,000/15,000	RG801164	RG802164
BX-165	21 1/4"	5,000	RG801165	RG802165
BX-169	5 1/8"	10,000	RG801169	RG802169
BX-171	8 9/16"	10,000/15,000	RG801171	RG802171

# API RING JOINT GASKETS

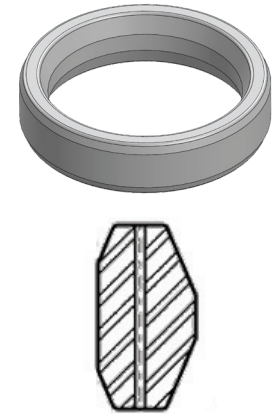
## RX Series

For Up From 2,000 to 5,000 PSI



### HARDNESS CHART

RING GASKET MATERIAL	MAXIMUM BRINELL	HARDNESS ROCKWELL B	IDENTIFICATION MARK
Low Carbon Steel	120	68	S
316 SS	160	83	S 316



Cross Section

### ORDERING INFO AND DIMENSIONS

#### ASME B16.5 Ring Joint Gaskets

RING GROOVE SIZE	FLANGE SIZE	PRESSURE RATING	Part Numbers	
			LOW CARBON STEEL	316 SS
RX-23	2"	300/600	RG511023	RG512023

#### API 6A Ring Joint Gaskets

RING GROOVE SIZE	FLANGE SIZE	PRESSURE RATING	Part Numbers	
			LOW CARBON STEEL	316 SS
RX-23	2 1/16"	2,000	RG511023	RG512023
RX-24	2 1/16"	3,000/5,000	RG511024	RG512024
RX-26	2 9/16"	2,000	RG511026	RG512026
RX-27	2 9/16"	3,000/5,000	RG511027	RG512027
RX-31	3 1/8"	2,000/3,000	RG511031	RG512031
RX-35	3 1/8"	5,000	RG511035	RG512035
RX-37	4 1/16"	2,000/3,000	RG511037	RG512037
RX-39	4 1/16"	5,000	RG511039	RG512039
RX-41	5 1/8"	2,000/3,000	RG511041	RG512041
RX-45	7 1/16"	2,000/3,000	RG511045	RG512045
RX-45/46	7 1/16"	2,000/3,000 to 5,000	RG511456	RG512456
RX-46	7 1/16"	5,000	RG511046	RG512046
RX-49	9"	2,000/3,000	RG511049	RG512049
RX-50	9"	5,000	RG511050	RG512050
RX-53	11"	2,000/3,000	RG511053	RG512053
RX-54	11"	5,000	RG511054	RG512054
RX-57	13 5/8"	2,000/3,000	RG511057	RG512057

# API RING JOINT GASKETS

## Rubber Coated Series

For Use Up to 5,000 PSI



R Series  
Cross Section

### ORDERING INFO AND DIMENSIONS

#### R Series Ring Joint Gaskets

Part Numbers

RING GROOVE SIZE	FLANGE SIZE	PRESSURE RATING	BUNA RUBBER COATED
R-20	1 1/2"	300/600/900/1,500	RG901020
R-23	2 1/16"	2,000	RG901023
R-24	2 1/16"	3,000/5,000	RG901024
R-27	2 9/16"	3,000/5,000	RG901027
R-31	3 1/8"	2,000/3,000	RG901031
R-35	3 1/8"	5,000	RG901035
R-37	4 1/16"	2,000/3,000	RG901037
R-39	4 1/16"	5,000	RG901039
R-41	5 1/8"	2,000/3,000	RG901041
R-44	5 1/8"	5,000	RG901044
R-45	7 1/16"	2,000/3,000	RG901045
R-45/46	7 1/16"	2,000/3,000 to 5,000	RG901456
R-46	7 1/16"	5,000	RG901046
R-49	9"	2,000/3,000	RG901049
R-50	9"	5,000	RG901050
R-53	11"	2,000/3,000	RG901053
R-54	11"	5,000	RG901054
R-57	13 5/8"	2,000/3,000	RG901057

# API RING JOINT GASKETS

## Rubber Coated Series

*For Use Up to 5,000 PSI*



BX Series  
Cross Section

### ORDERING INFO AND DIMENSIONS

#### BX Series Ring Joint Gaskets

RING GROOVE SIZE	FLANGE SIZE	PRESSURE RATING	Part Numbers
			BUNA RUBBER COATED
BX-151	1 13/16"	10,000/15,000/20,000	RG901151
BX-152	2 1/16"	10,000/15,000/20,000	RG901152
BX-153	2 9/16"	10,000/15,000/20,000	RG901153
BX-154	3 1/16"	10,000/15,000/20,000	RG901154
BX-155	4 1/16"	10,000/15,000/20,000	RG901155
BX-156	7 1/16"	10,000/15,000/20,000	RG901156
BX-158	11"	10,000/15,000/20,000	RG901158
BX-159	13 5/8"	10,000/15,000/20,000	RG901159
BX-160	13 5/8"	5,000	RG901160
BX-169	5 1/8"	10,000/15,000/20,000	RG901169

### NOTE

*These gaskets are for test purposes only and are not certified under API or ASME and not to be used for permanent installation.*